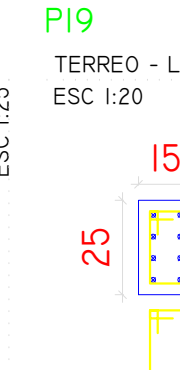
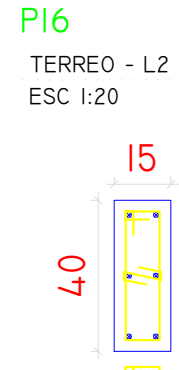
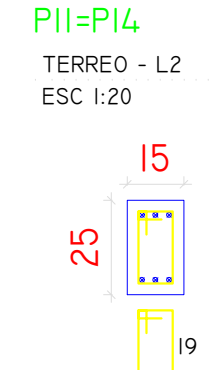
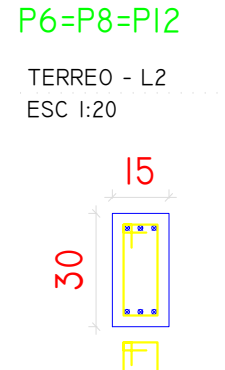
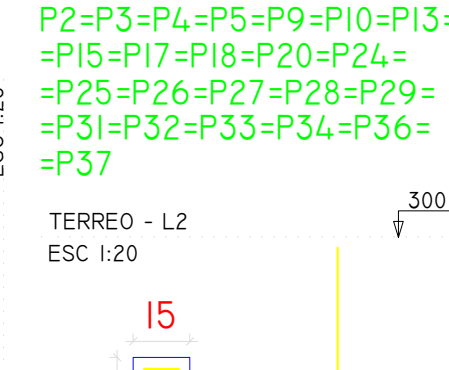
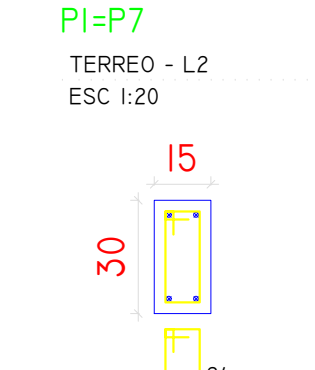


FORMA DO PAVIMENTO TERREO (NÍVEL 300)
ESCALA 1:50

NOME	SEÇÃO	VELOCIDADE	NÍVEL
VT1	ISx30	0	300
VT2	ISx25	0	300
VT3	ISx30	0	300
VT4	ISx30	0	300
VT5	ISx25	0	300
VT6	ISx30	0	300
VT7	ISx30	0	300
VT8	ISx30	0	300
VT9	ISx30	0	300
VT10	ISx30	0	300
VT11	ISx30	0	300
VT12	ISx30	0	300
VT13	ISx30	0	300
VT14	ISx30	0	300
VT15	ISx30	0	300
VT16	ISx30	0	300
VT17	ISx30	0	300
VT18	ISx30	0	300
VT19	ISx30	0	300
VT20	ISx30	0	300
VT21	ISx30	0	300
VT22	ISx30	0	300
VT23	ISx30	0	300

NOME	SEÇÃO	VELOCIDADE	NÍVEL
P1	IS x 30	0	300
P2	IS x 25	0	300
P3	IS x 25	0	300
P4	IS x 25	0	300
P5	IS x 25	0	300
P6	IS x 30	0	300
P7	IS x 30	0	300
P8	IS x 25	0	300
P9	IS x 25	0	300
P10	IS x 25	0	300
P11	IS x 25	0	300
P12	IS x 30	0	300
P13	IS x 25	0	300
P14	IS x 25	0	300
P15	IS x 25	0	300
P16	IS x 40	0	300
P17	IS x 25	0	300
P18	IS x 25	0	300
P19	IS x 25	0	300
P20	IS x 25	0	300
P21	IS x 35	0	300
P22	IS x 30	0	300
P23	IS x 25	0	300
P24	IS x 25	0	300
P25	IS x 25	0	300
P26	IS x 25	0	300
P27	IS x 25	0	300
P28	IS x 25	0	300
P29	IS x 25	0	300
P30	IS x 25	0	300
P31	IS x 25	0	300
P32	IS x 25	0	300
P33	IS x 25	0	300
P34	IS x 25	0	300
P35	IS x 35	0	300
P36	IS x 25	0	300
P37	IS x 25	0	300

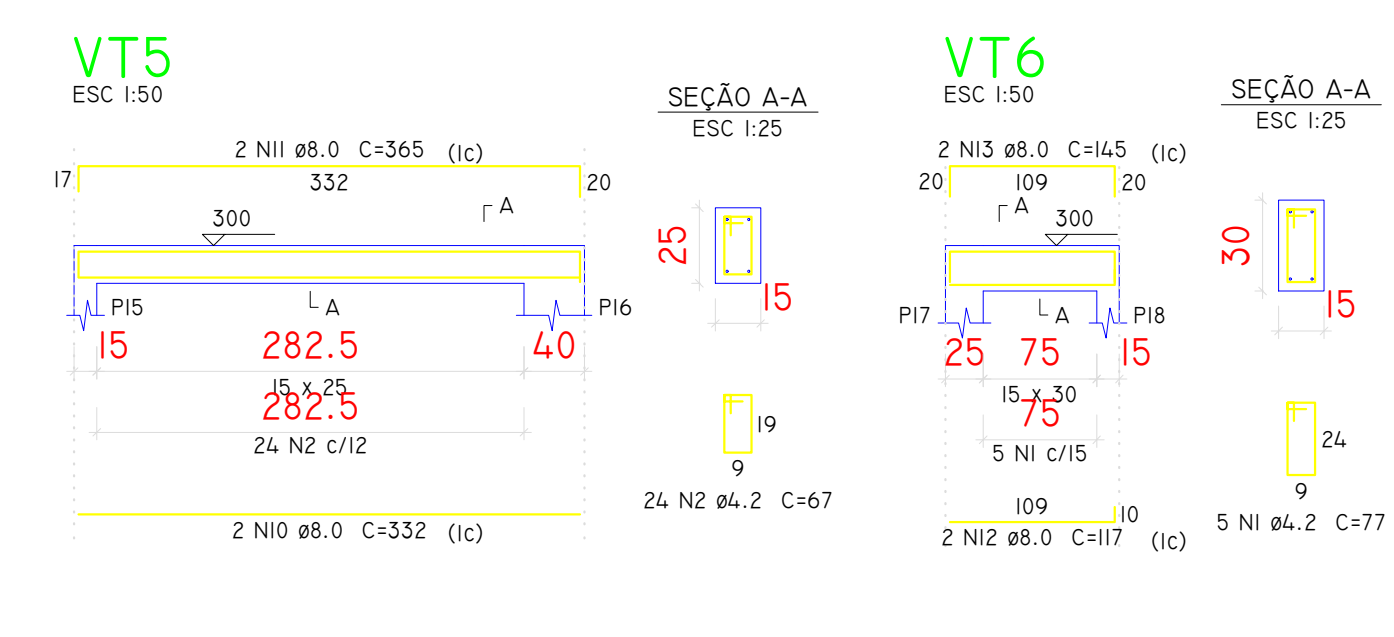
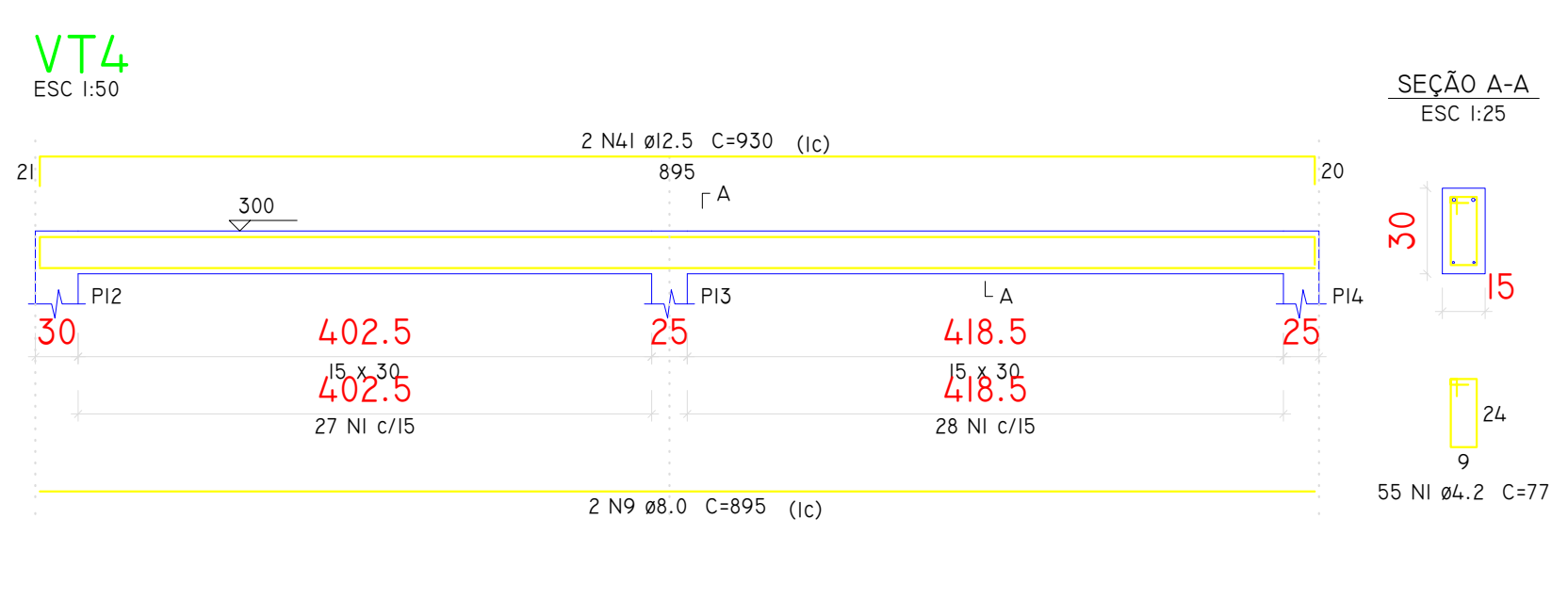
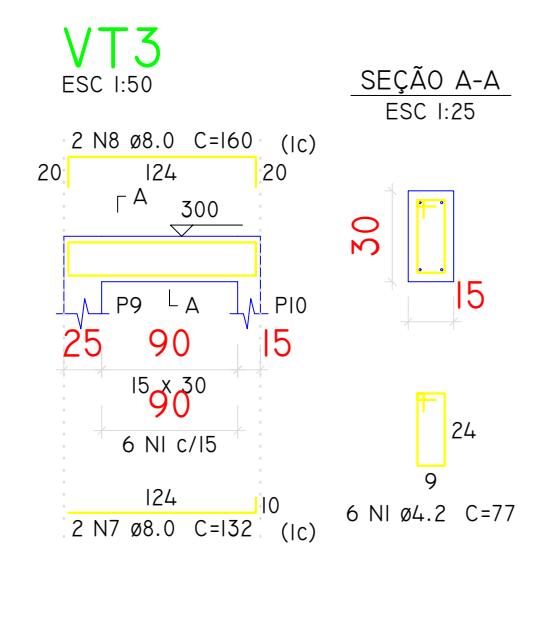
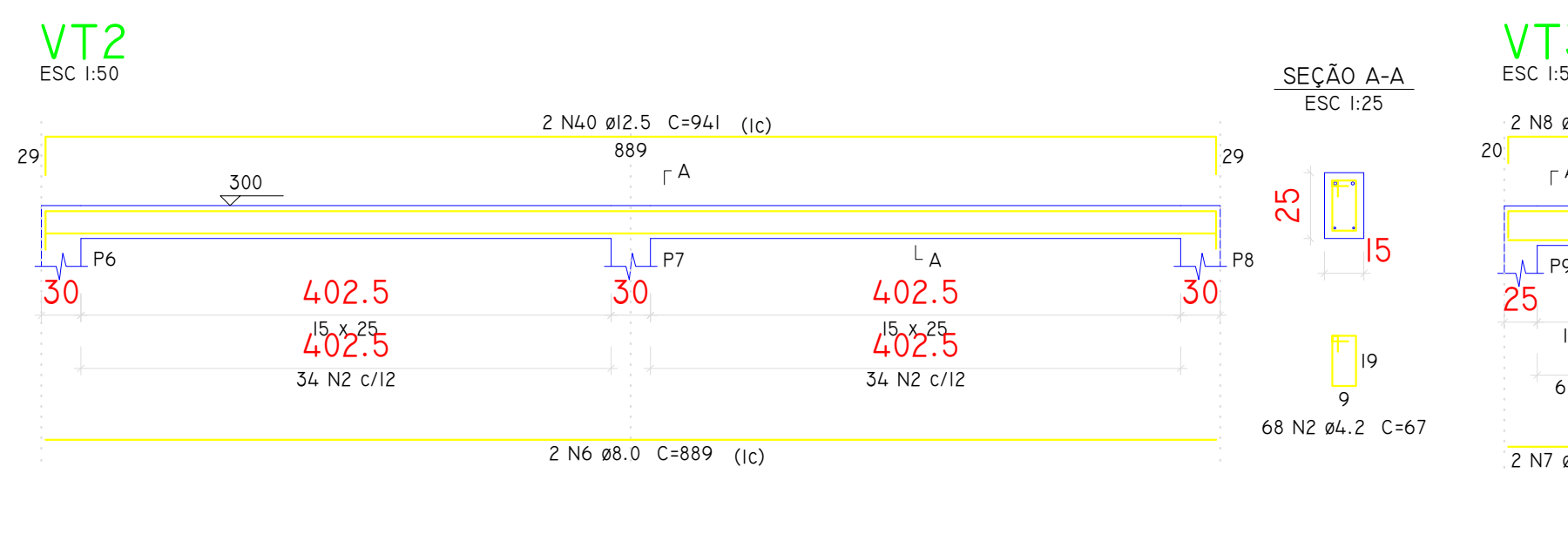
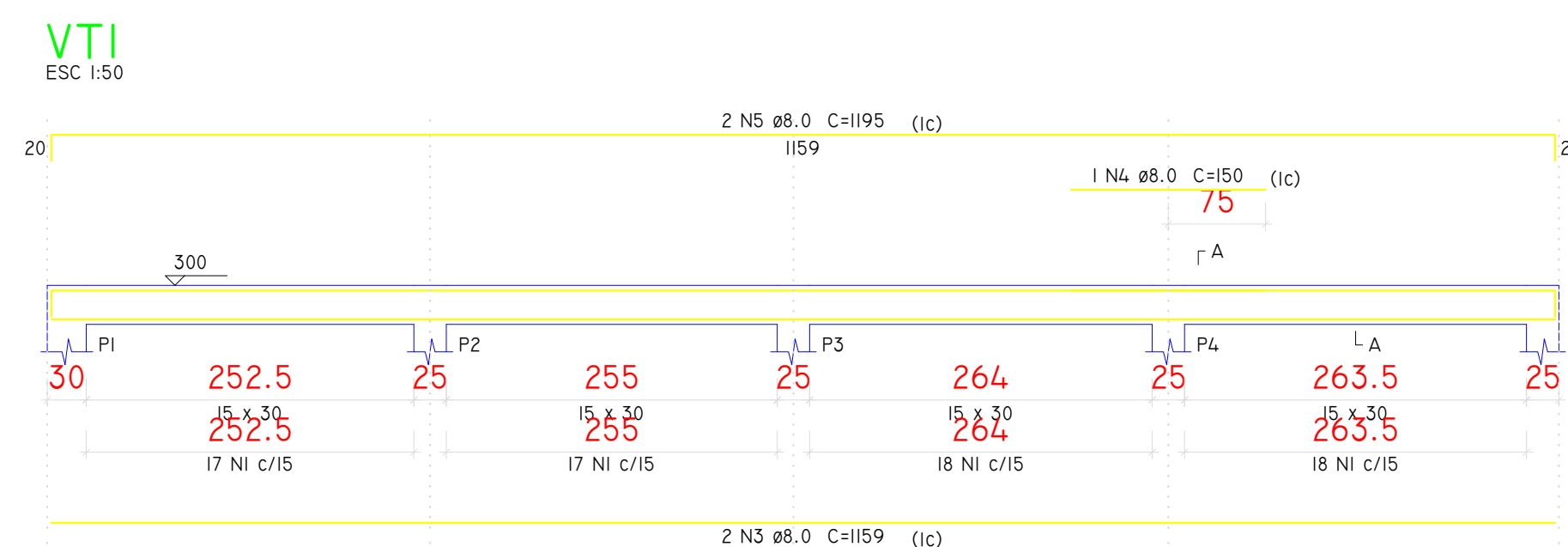
NOITE	TIPO	ALTURA (m)	ELEVACAO (m)	NÍVEL (m)	PESO PRÓPRIO (kgf/m²)	ADICIONAL	ACCIDENTAL	LOCALIZADA
L1	PRE-MOLDADA	13	0	300	176	75	75	-
L2	PRE-MOLDADA	13	0	300	176	75	75	-
L3	PRE-MOLDADA	13	0	300	176	75	75	-
L4	PRE-MOLDADA	13	0	300	176	75	75	-
L5	PRE-MOLDADA	13	0	300	176	75	75	-
L6	PRE-MOLDADA	13	0	300	176	75	75	-
L7	PRE-MOLDADA	13	0	300	176	75	75	-
L8	PRE-MOLDADA	13	0	300	176	75	75	-
L9	PRE-MOLDADA	13	0	300	176	75	75	-
L10	PRE-MOLDADA	13	0	300	176	75	75	-



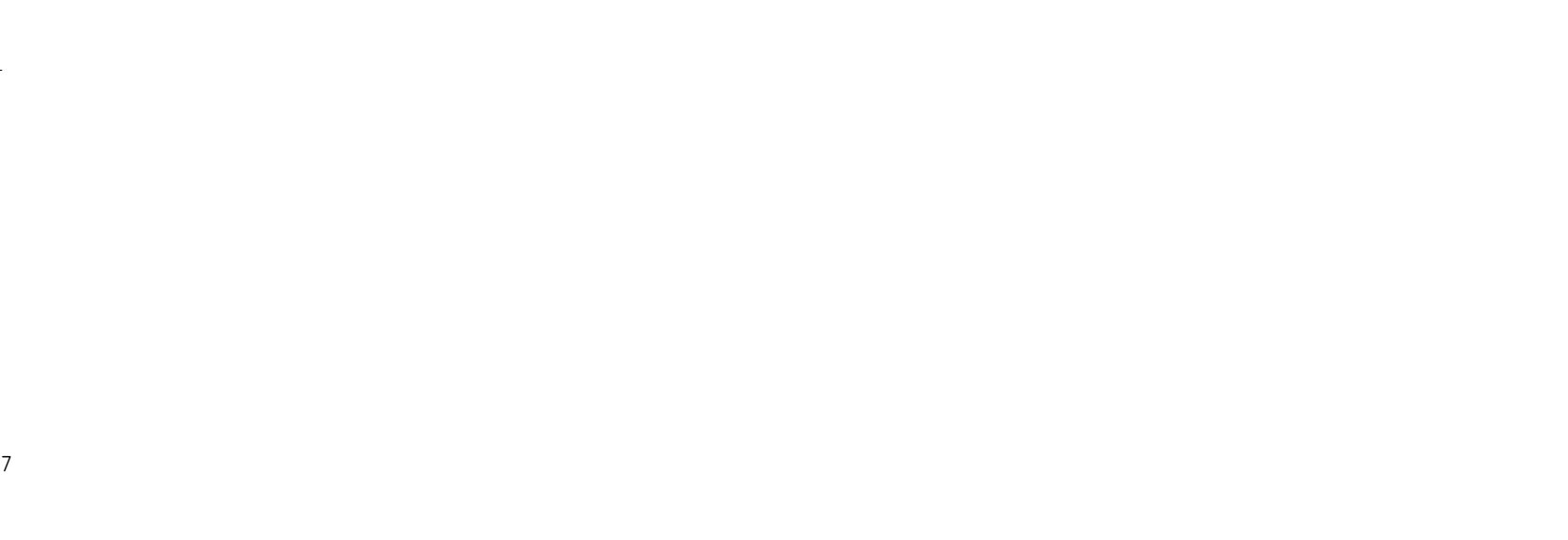
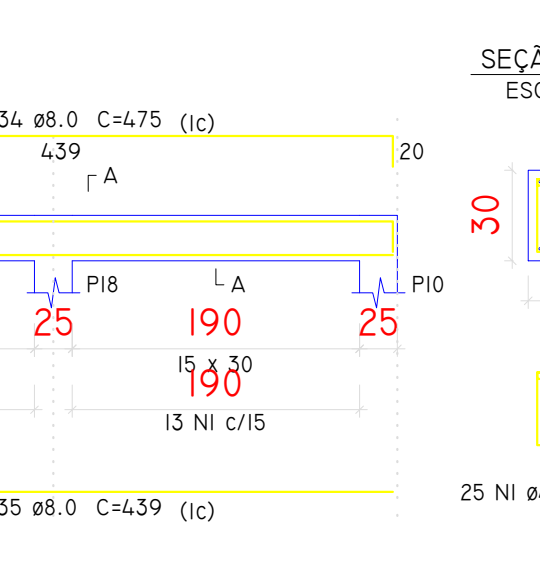
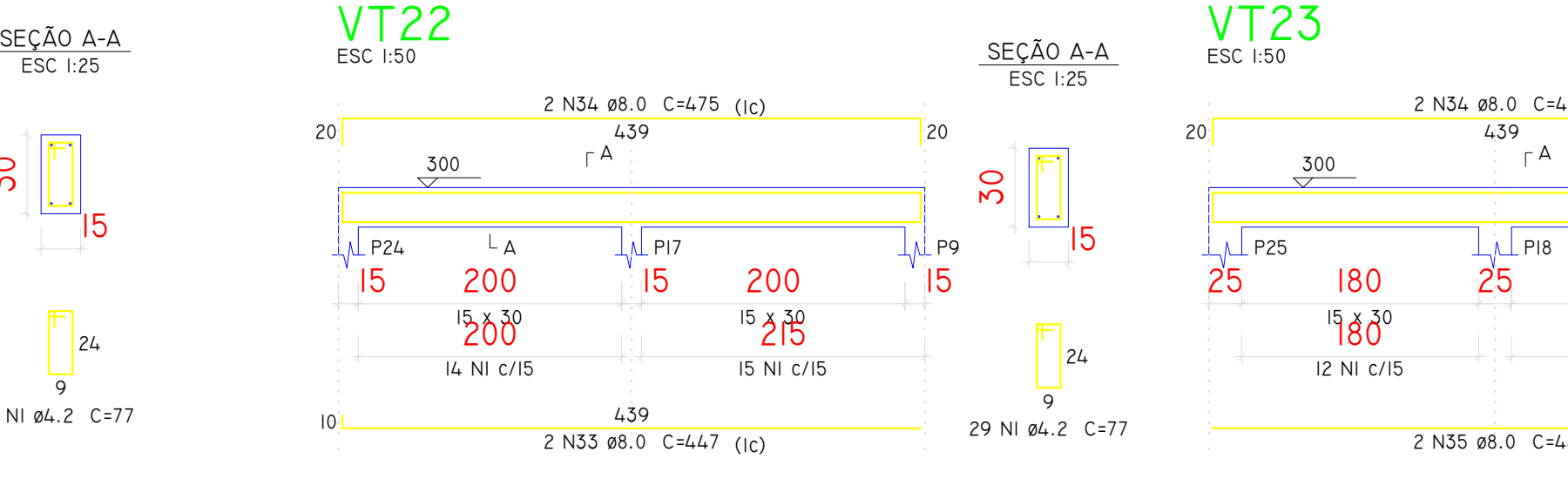
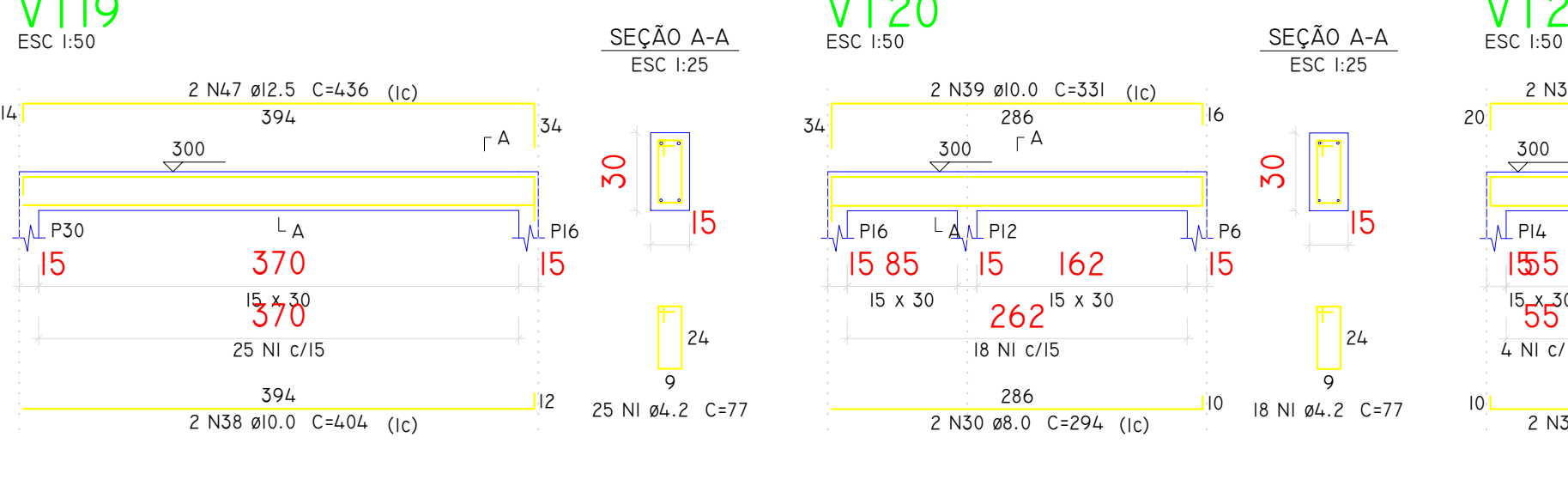
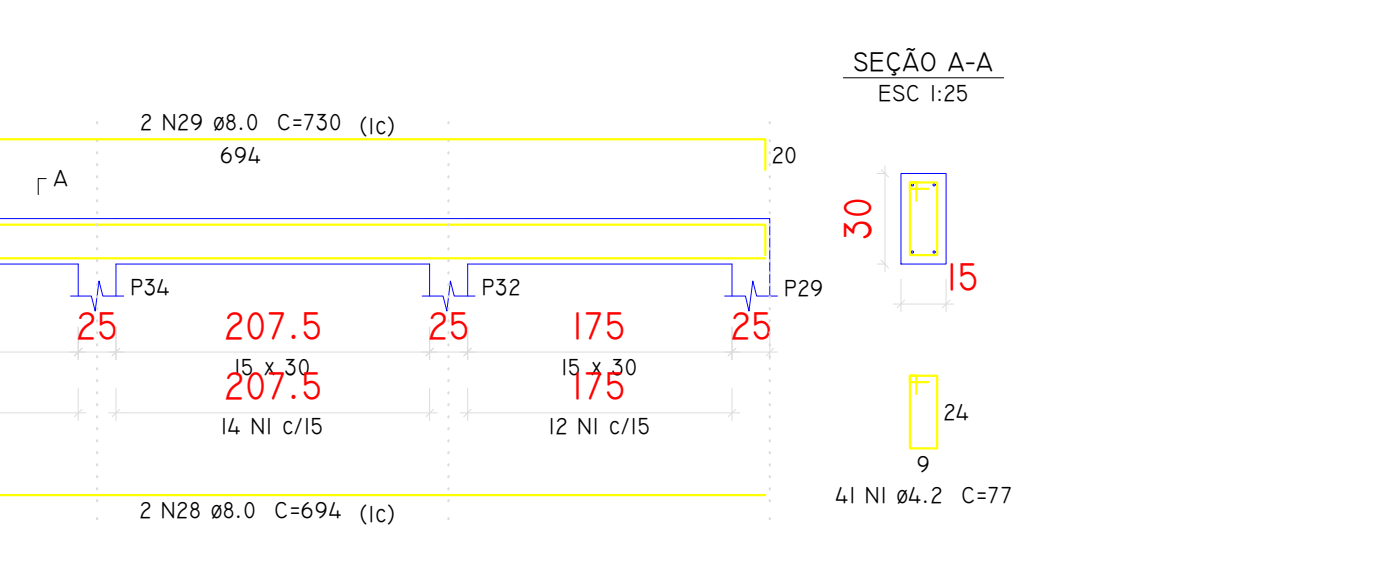
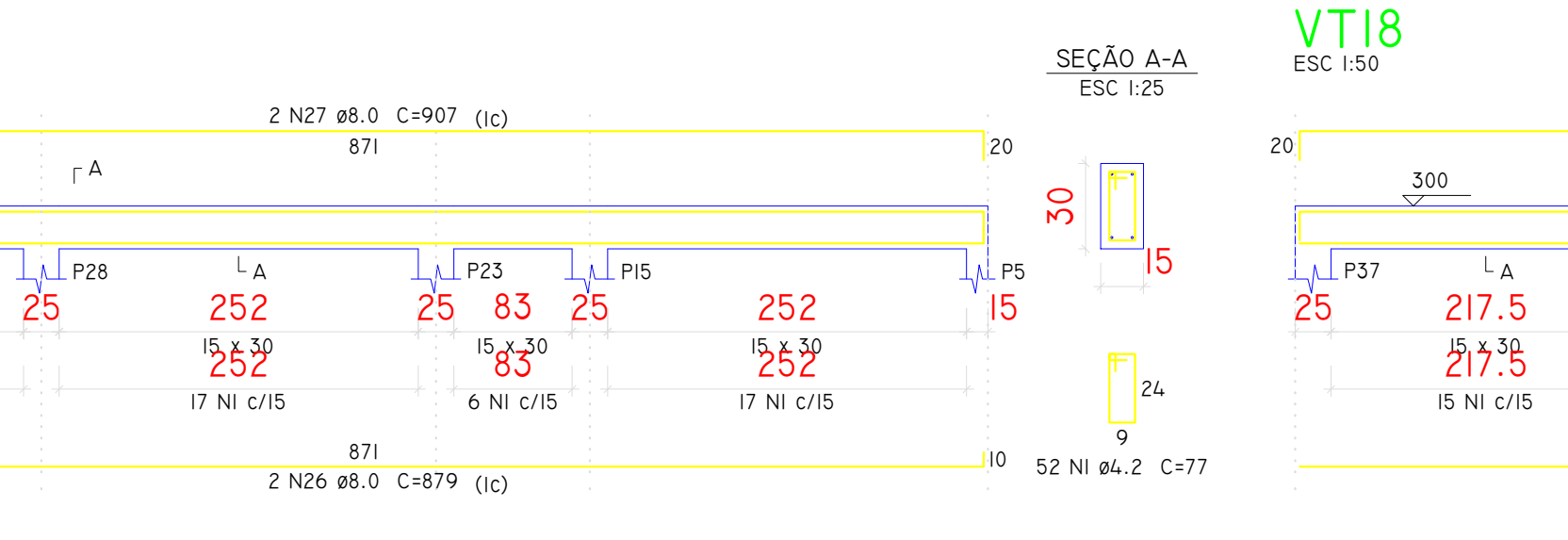
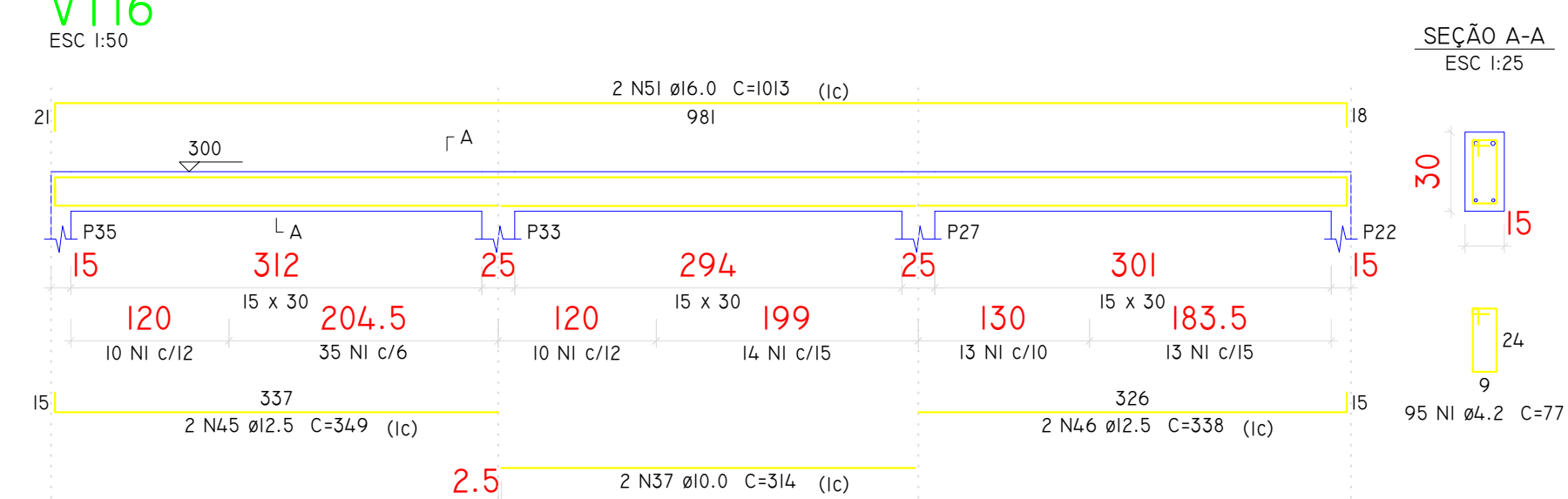
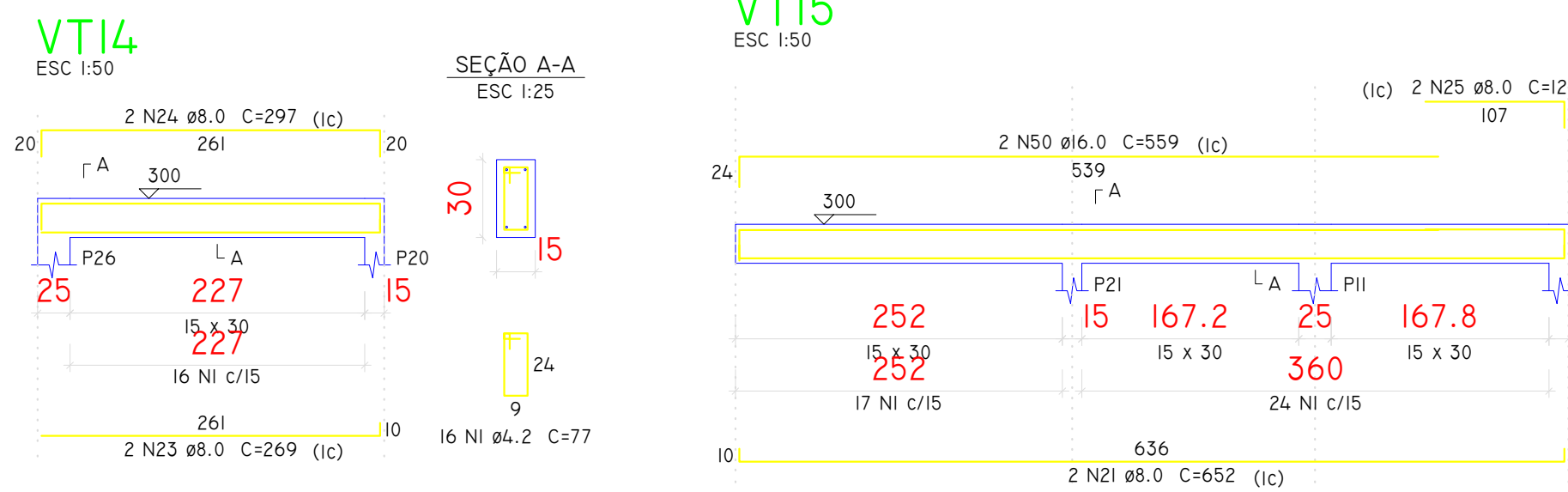
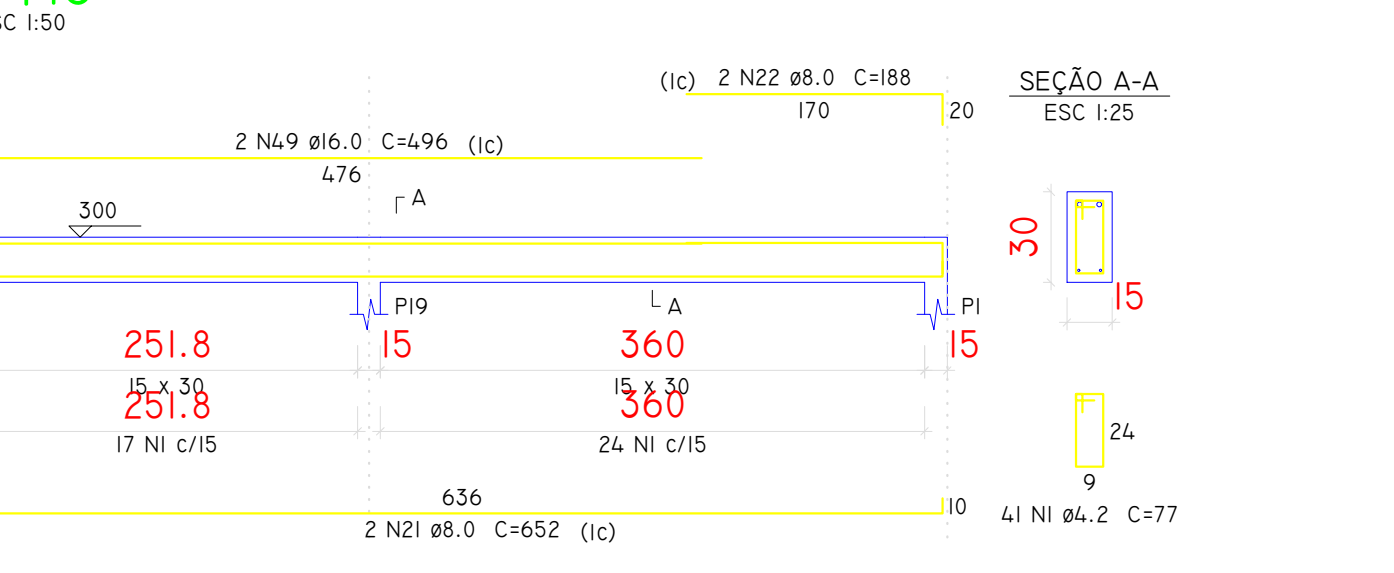
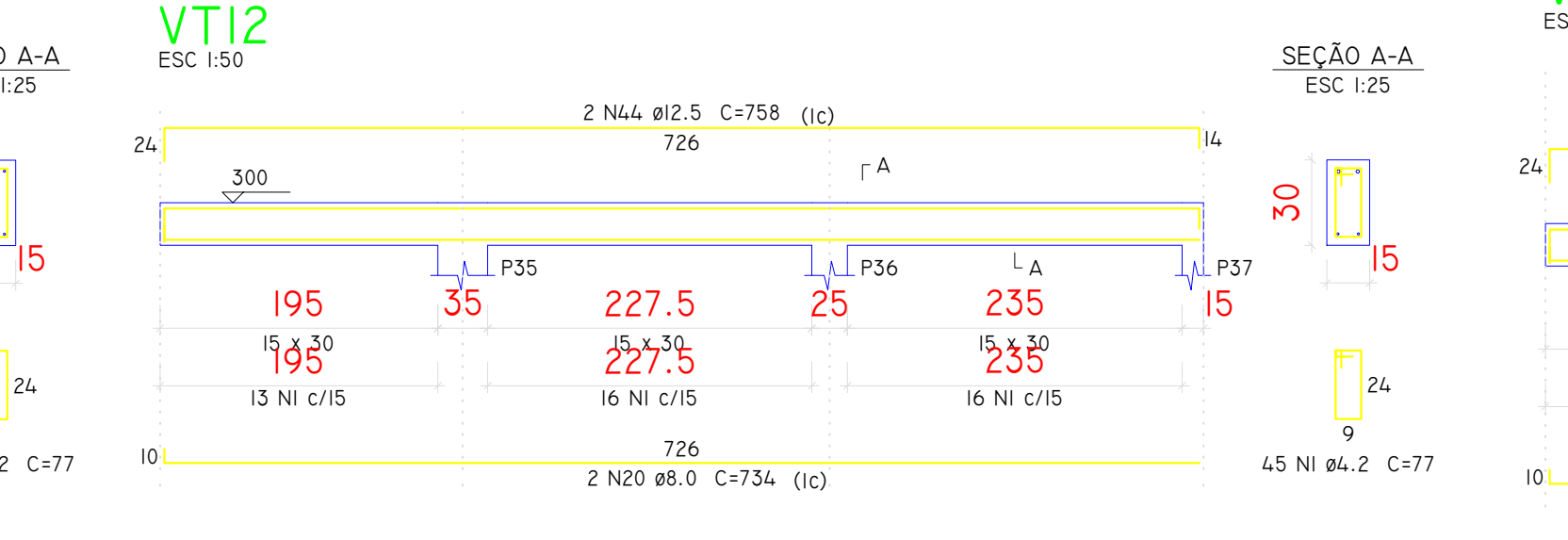
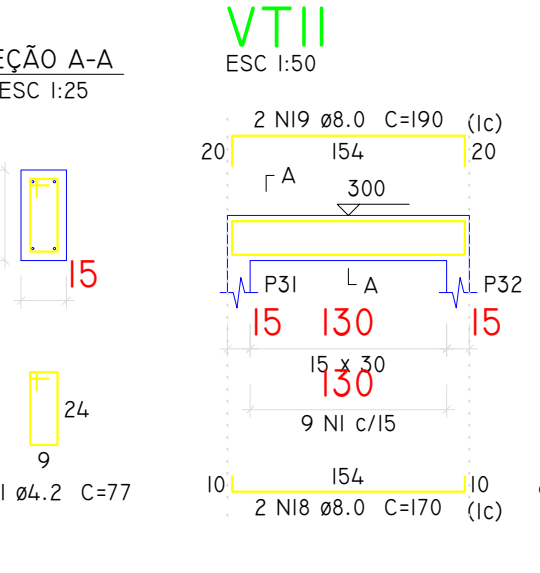
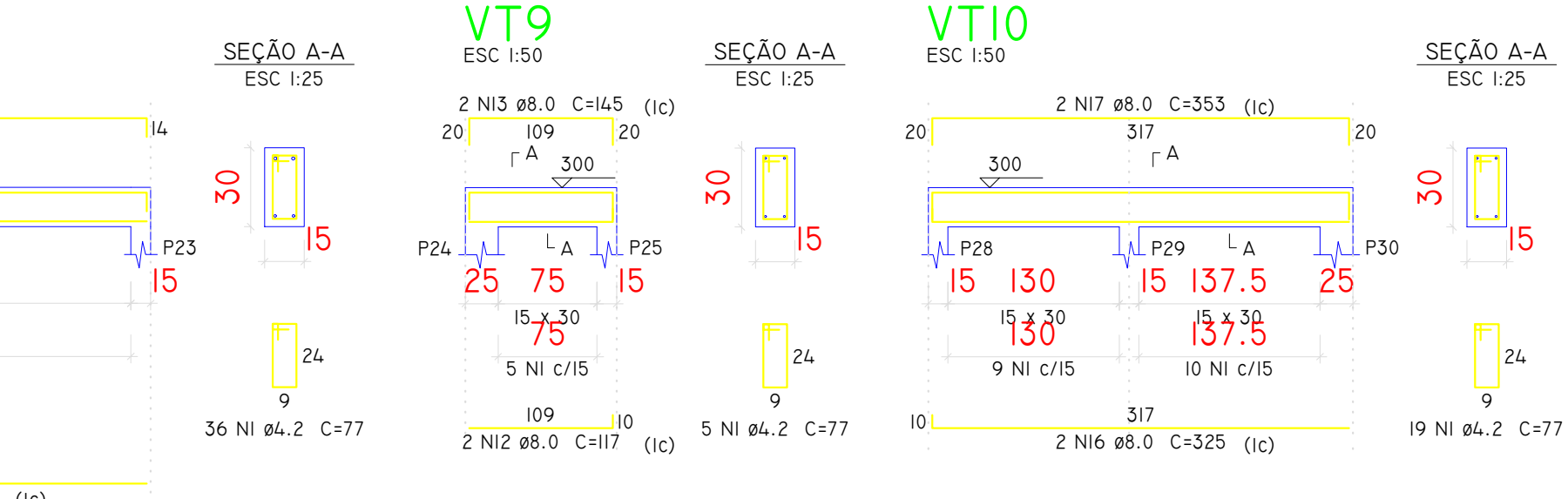
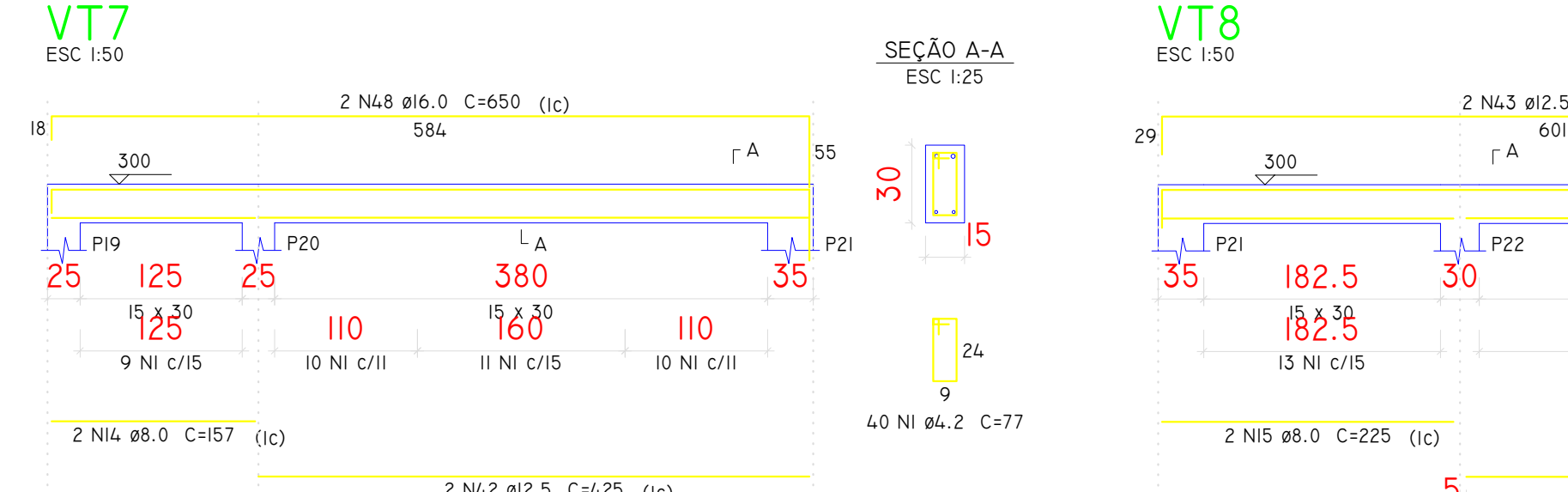
ACO	N	DIAM (mm)	QUANT	C. UNIT (cm)	C. TOTAL (cm)
CA60	1	4.2	190	77	14630
	2	4.2	924	67	61908
	3	4.2	34	97	3298
	4	4.2	34	23	782
	5	4.2	45	87	3905
	6	4.2	25	23	575
	7	4.2	20	23	460
	8	8.0	144	297	42768
	9	10.0	10	297	2970
	10	12.5	26	297	7722

ACO	DIAM (mm)	C. TOTAL (cm)	PESO + 10 % (kg)
CASO	8.0	427.7	185.6
	10.0	29.7	20.1
	12.5	77.3	81.8
CA60	4.2	895.7	102.4
PESO TOTAL (kg)			
CASO		287.6	
CA60		102.4	

VOLUME DE CONCRETO (C-25) = 4.66 m³
ÁREA DE FORMA = 92.7 m²



ACO	N	DIAM (mm)	QUANT	C. UNIT (cm)	C. TOTAL (cm)
CA60	1	4.2	92	67	6164
CASO	3	8.0	2	1159	2318
	4	8.0	1	150	150
	5	8.0	2	1095	2190
	6	8.0	2	889	1778
	7	8.0	2	264	528
	8	8.0	2	160	320
	9	8.0	2	895	1790
	10	8.0	2	332	664
	11	8.0	2	365	730
	12	8.0	2	225	450
	13	8.0	4	145	580
	14	8.0	2	157	314
	15	8.0	2	225	450
	16	8.0	2	325	650
	17	8.0	2	353	706
	18	8.0	2	170	340
	19	8.0	2	190	380
	20	8.0	2	734	1468
	21	8.0	4	652	2608
	22	8.0	2	88	376
	23	8.0	2	269	538
	24	8.0	2	297	594
	25	8.0	2	250	500
	26	8.0	2	879	1758
	27	8.0	2	907	1814
	28	8.0	2	694	1388
	29	8.0	2	730	1460
	30	8.0	2	88	376
	31	8.0	2	202	404
	32	8.0	2	444	888
	33	8.0	2	447	894
	34	8.0	4	475	1900
	35	8.0	2	439	878
	36	10.0	2	367	734
	37	10.0	2	34	68
	38	10.0	2	404	808
	39	10.0	2	331	662
	40	12.5	2	261	522
	41	12.5	2	930	1860
	42	12.5	2	425	850
	43	12.5	2	638	1276
	44	12.5	2	758	1516
	45	12.5	2	439	878
	46	12.5	2	338	676
	47	12.5	2	356	712
	48	16.0	2	650	1300
	49	16.0	2	496	992
	50	16.0	2	559	1118
	51	16.0	2	1013	2026



ACO	DIAM (mm)	C. TOTAL (cm)	PESO + 10 % (kg)
CASO	10.0	28.4	137.4
	12.5	96.5	102
	16.0	54.4	94.4
CA60	4.2	588.4	70.4
PESO TOTAL (kg)			
CASO		353	
CA60		70.4	

VOLUME DE CONCRETO (C-25) = 5.29 m³
ÁREA DE FORMA = 88.47 m²

PROJETO

ESTRUTURAL

CENTRO DIAGNÓSTICO E LABORATÓRIO

RESPONSÁVEL TÉCNICO

ANTONIO VINICIUS
PROFESSOR TÍTULO
CREA - 01958-0/PE

PROJETO E GESTÃO

ANTÔNIO C. A. DE CARVALHO
00170004

DATA

AGOSTO 2017

DESENHO

ADILSON BERNARDES

REVISÃO

REFORMA E AMPLIAÇÃO DO HOSPITAL MUNICIPAL DE IBAITI